



DiGiCo V1926 Release Notes

November 2024

Contents

1.0	Advanced Macro Triggers	3
1.0.1	Smart Keys	3
1.0.2	External	3
1.0.3	Snapshots	4
1.0.4	Other	4
1.0.5	Advanced	5
1.1	OSC Macros	6
1.2	Macro list search function	7
1.3	Global tap tempo value entry	7
1.4	Sound Devices A20-Opto is a supported Optocore device.	8
1.5	Errors Fixed	9

1.0 Advanced Macro Triggers

The Macro Editor has been expanded to include new options for triggering Macros.

Existing options have been retained but laid out slightly differently on screen in tabbed sections.

Macros can now also be triggered as part of Snapshot recall.

Note – only one trigger type can be selected for each Macro.

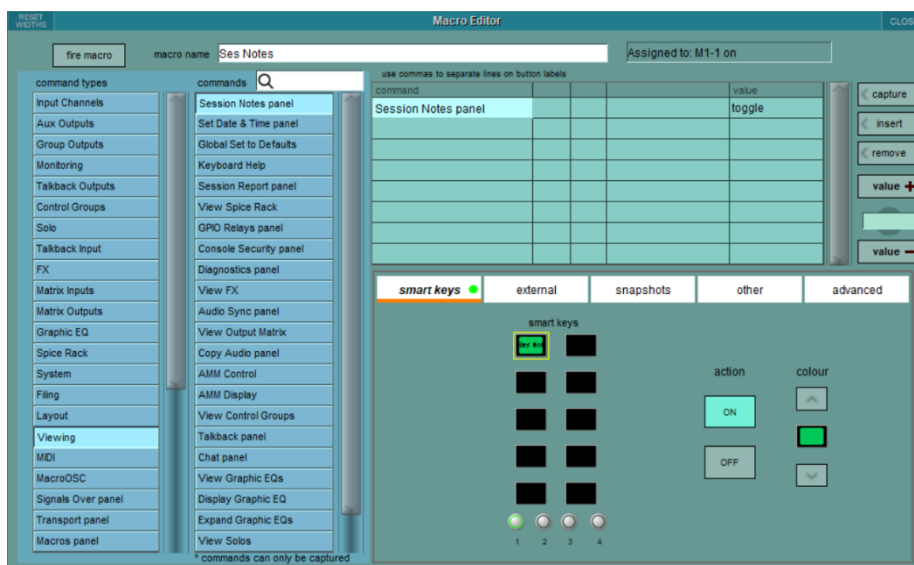
The **selected**, displayed tab will be underlined in **orange** and the **active trigger** will be displayed with a **green circle**.

1.0.1 Smart Keys

The **smart keys** tab allows assignment of the Macro trigger to the console's worksurface Macro buttons.

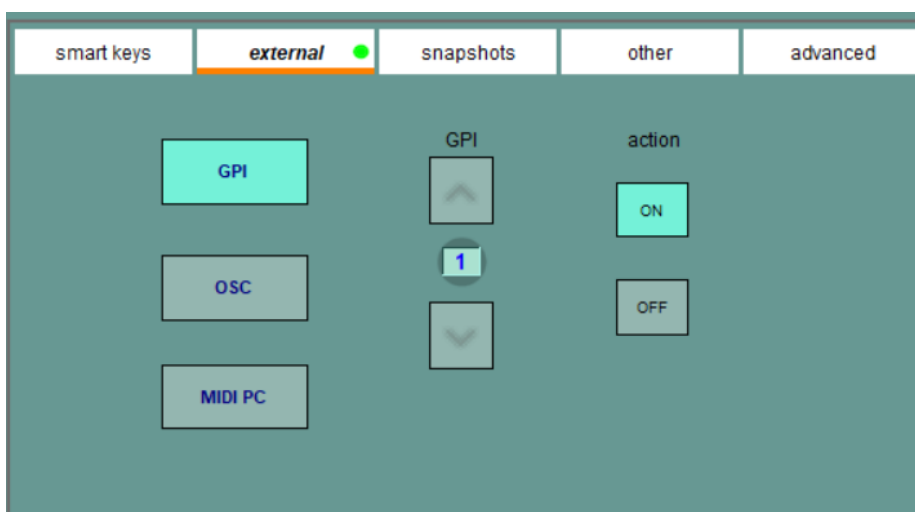
Where relevant, select a **Macro bank** number and then the required button in that bank.

The Macro can be assigned to the **ON** or **OFF** action of the button and a background colour selected.



1.0.2 External

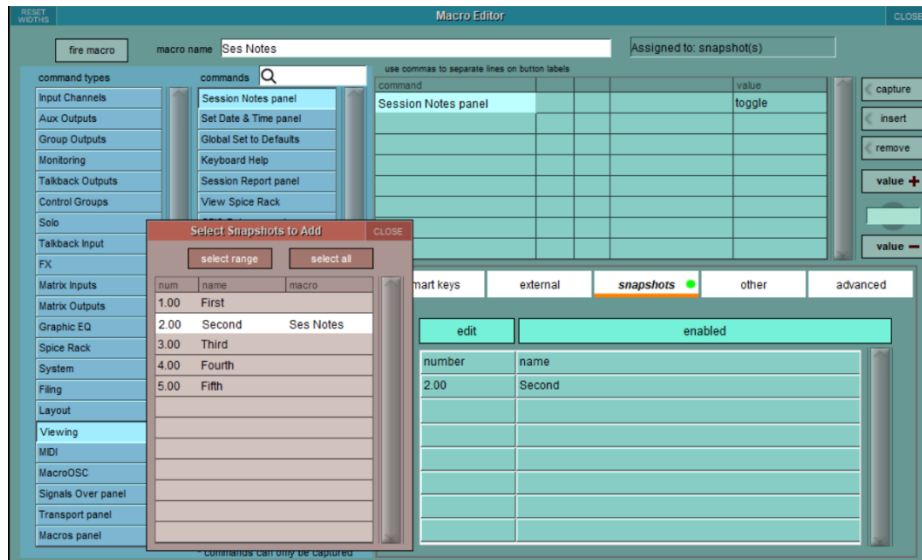
The **external** tab allows assignment of the Macro trigger to a GPI, an incoming OSC command or a MIDI Program change message. Other relevant options are displayed when the external device type is selected.



1.0.3 Snapshots

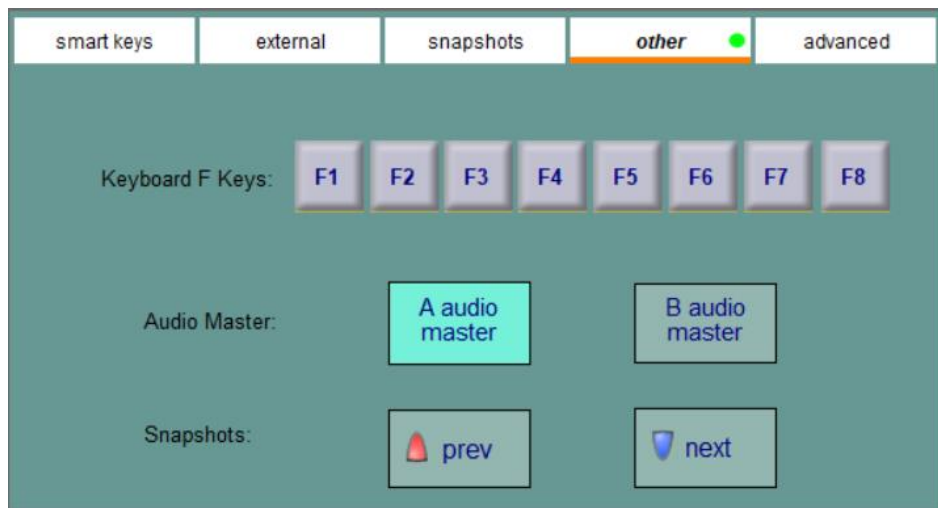
A console snapshot can also be defined as a Macro trigger by pressing the **edit** button in the **snapshots** tab which displays a list of available snapshots. Single or multiple snapshots can be added to the list of triggers for any particular Macro.

Note - Any snapshot can only trigger a single Macro so, if a snapshot is required to trigger more Macro functions than those included in the existing Macros, create a new Macro which includes all of the required commands for that specific purpose.



1.0.4 Other

The **other** tab allows assignment of the Macro trigger to **keyboard F keys**, the console **Audio Mastership switch A or B** and the worksurface **prev** and **next** snapshot buttons.



1.0.5 Advanced

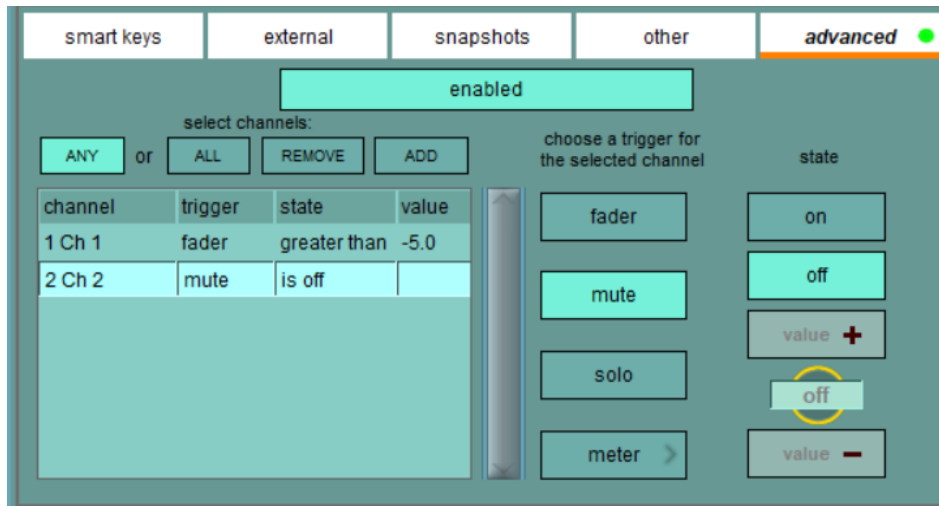
The **advanced** tab allows conditional triggers for Macros whereby the status of certain channel controls and meters can be used to trigger a Macro.

Single or multiple triggers can be specified for one or many channels.

Required channels can be chosen by touching the **ADD** button and selecting from the channel list.

Each channel touched will be added to the list. Channels can be removed from the list by selecting them from the list and touching **REMOVE**.

If multiple channels are selected, the Macro can be triggered when either **ANY** or **ALL** conditions have been met.



Choose the required **trigger** and **state** for each of the entries in the list.

Options for potential triggers are **fader** level, **mute** state, **solo** state and **meter** level.

For mute and solo, either **on** or **off** states can be selected.

For faders, a value can be set and the trigger assigned to a level **greater than** or **less than** that value.

When the relevant fader passes through that value, the condition will be met.

For meters, first select the required meter position from **pre-trim**, **post-trim**, **pre-fader** or **post-fader** and then enter a value and a state in a similar way to faders.

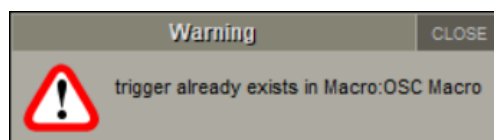
To change the meter position, touch the current selection to display the meter position choices again.

Note – for meters, a value of **sp** represents “signal present”.

For any given channel, each trigger and state combination can only be used once.

For example, for Channel 1, a fader greater than state can only be used once but fader greater than and fader less than is a valid combination.

If the same trigger/state combination is entered twice for the same channel the following warning will be displayed.



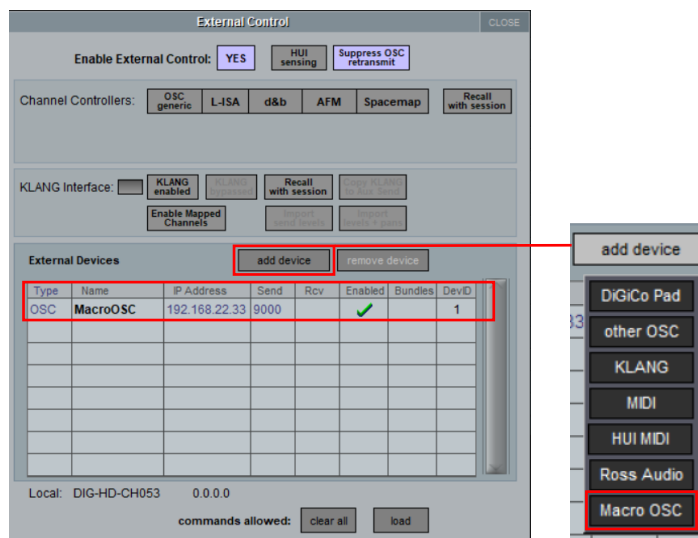
1.1 OSC Macros

There is a new Macro type called **MacroOSC** which allows a Macro to transmit an OSC message via the console's ethernet port.

In the **Master Screen > Setup > External Control** panel, a new **Device Type** is used to define the details of the external device which will receive the OSC commands.

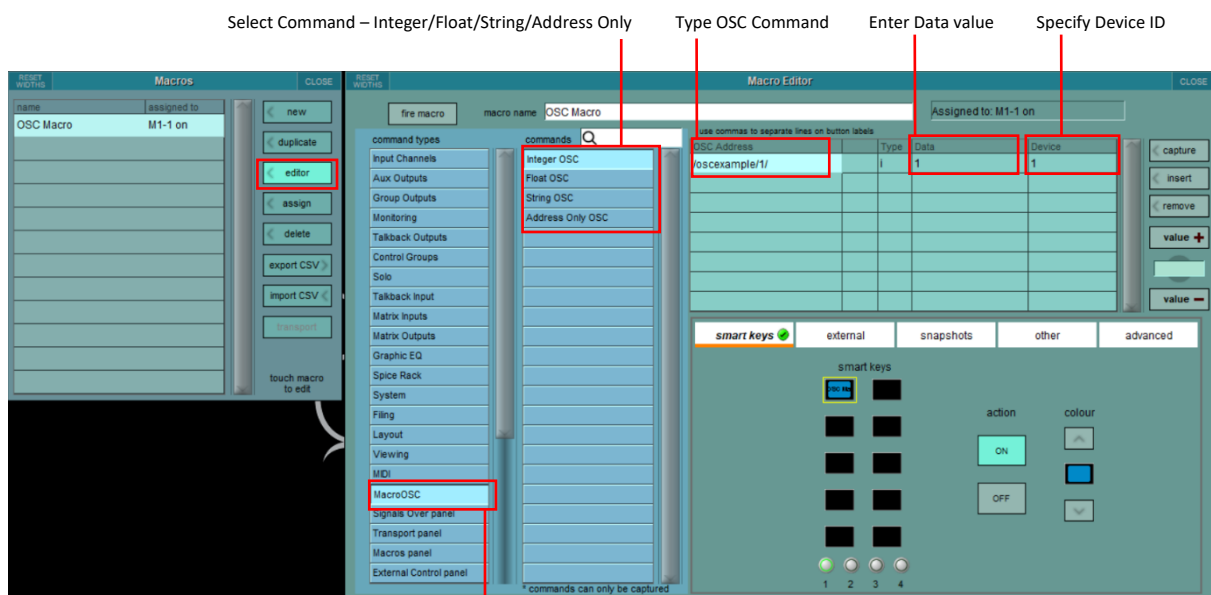
Touch the **add device** button and select **Macro OSC** from the list of device types, enter an IP address for the receiving device and a **Send port** number.

Multiple Macro OSC devices can be defined and each should have a unique **DevID** automatically assigned by the console.



In the **Macro Editor**, there is a command type called **MacroOSC** which offers options of **Integer, Float, String and Address Only** (no data value required) OSC commands.

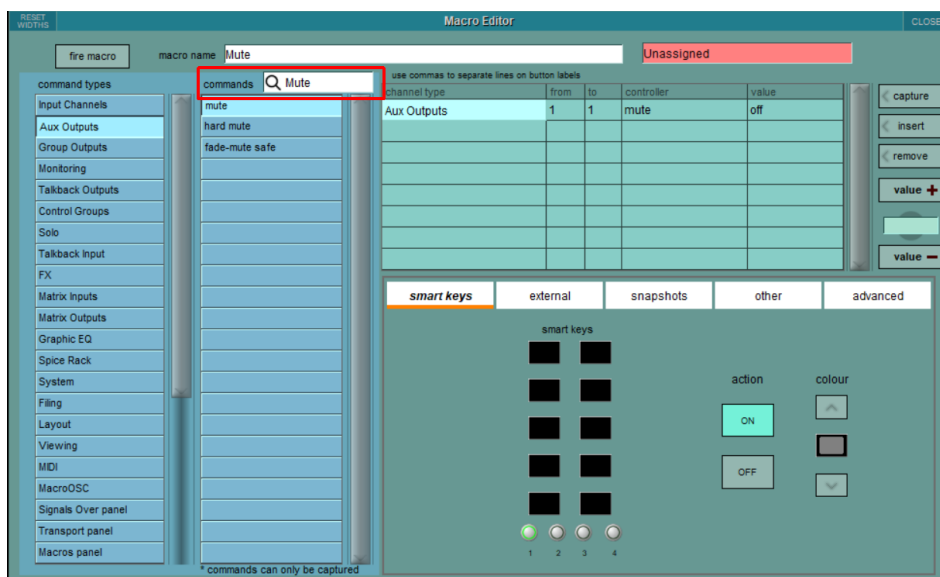
Define the required **OSC command** and **data value** and then, using the **value +/-** buttons, specify a destination **Device ID** in the right-hand column.



Select Command Type - MacroOSC

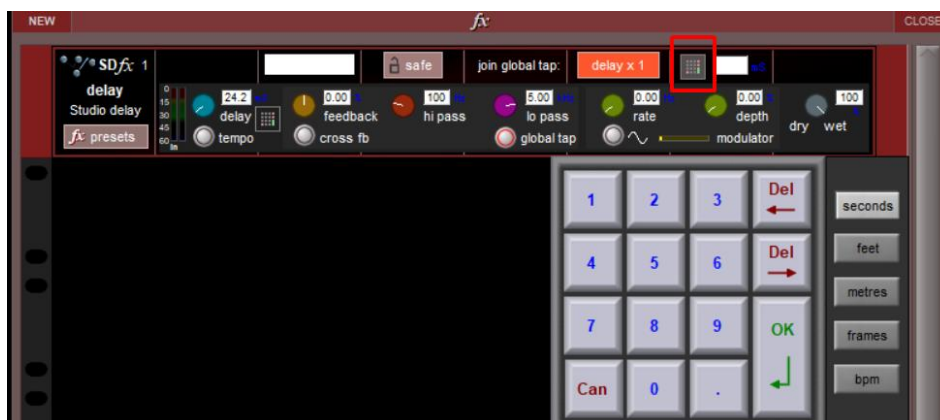
1.2 Macro list search function

The Macro command list for each **command type** can now be searched by entering text in the **commands search** box at the top of the list. A search can be performed for whole or parts of words.



1.3 Global tap tempo value entry

The Global Tap value can be entered manually by touching the **keypad icon** in the Delay FX panel and typing a number.

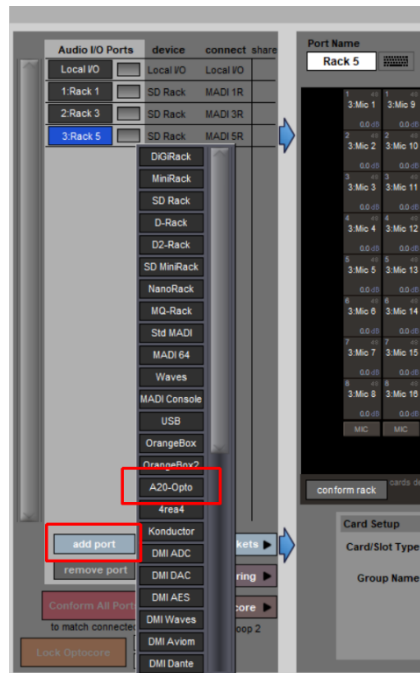


1.4 Sound Devices A20-Opto is a supported Optocore device

The Sound Devices A20-Opto (Optocore equipped I/O Expansion Box for A20-SuperNexus) can be added to an existing DiGiCo Optocore system.

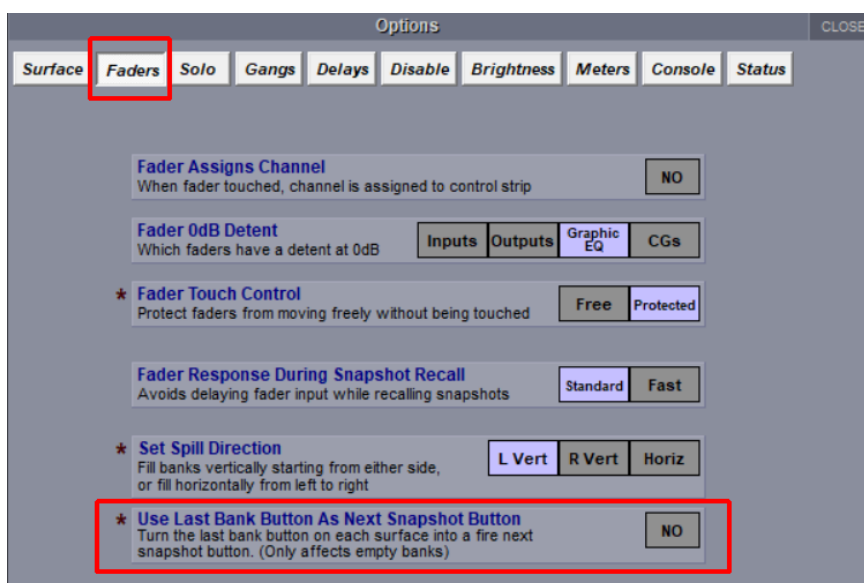
With the device connected, a **Conform All Ports** command in **Audio IO** will detect and populate the required IO Port and sockets or the device can be added manually from the **add port** drop down list.

The device itself has a required local configuration for setting the OPTO ID and fibre speed.



Other Features

- When Klang is enabled on a stereo channel, the default width is now 60°.
- An **Option** in the **Faders tab** on Q3 and Q2 consoles to make the last (if unpopulated) bank button on each surface into a **Snapshot Next** button.



1.5 Errors Fixed

- Status panel traffic lights could show incorrect data for PSU and Waves Network.
- KLANG enable button did not work after a session restructure.
- Solo buss fader would not be set to Off on a mirrored surface.
- d&b Soundscape control was only working in one direction.
- An Access violation could occur when converting a session to a non-Quantum console if it had a DMI AVB card in Audio IO.
- Offline Mouse wheel control did not work for FX.
- SD5 and SD7 session files could not be loaded directly into Q5 and Q7 respectively.
- On a Mirrored console, moving the master fader while in unattended move would change the audio level when the console was unlocked.
- CG Mutes were not being applied correctly to a channel if CG assignment for that channel was changed by cue recall.
- Options panel was not recalling the last selected tab.
- DiGiCo logo on overview screen was cropped on Q2.
- Q7 meterbridge delay units were out of alignment.