

TECHNICAL NOTE

Date: May 2019

Ref: TN454

Raised by: RW

Distributed to: As Required



Soundtracs - Digico(UK) Ltd. Unit 10 Silverglade Business Park Chessington Surrey KT9 2QL England
Tel: +44 1372 845600 Fax: +44 1372 845656 email: support@digiconsoles.com

Upgrading SD12 to V1090

These instructions will guide you through updating your SD12 Console to the latest release V1090.

V1090 replaces V1069 as the latest release.

This update involves updating all or some of the following: Console Software, Engine Host and Worksurfaces.

Please note that as part of the SD12 Worksurface upgrade, there are additional changes required. Please carefully read and follow these update instructions.

SD12 V1090 is compatible with External Waves MultiRack Control.

Please visit www.waves.com/downloads/digico for more information and note that this new functionality will require the installation of SoundGrid Drivers on the SD12 console if not already installed.

If you are using DMI cards with your SD12, there may be DMI Card Firmware updates to perform.

To purchase the SD12-96 upgrade, please visit www.digico.biz

Please note that in the unlikely event that the Local IO fails to update correctly, you may be required to reprogram it using an ICD2 programmer. Please consult your local DiGiCo distributor for more information.

Allow yourself plenty of time to perform these upgrades.

The following table lists the versions and codes you will end up with after performing this update

	Version 1069	Version 1090
Software	10.2.1069	10.5.1090
Worksurfaces	39	47
Local I/O	55	55
GPIO – SD12GPIO.hex	10	10
Engine: HOST – sp6v.bin	28/01/19	08/04/19
Engine: FPGA – sp6e.bit	29/01/2013	29/01/2013
Engine : Effects	18/04/2012	18/04/2012
Vulcan Host – VulcanTiva.dfu	26	26
Vulcan FPGA – Vulcan_Interface_FPGA.bit	22/02/2017	22/02/2017
USB Audio – XMOS.bin	03/10/2016	03/10/2016
D-Rack: Drack8b.bin	10/12/2014	10/12/2014
D-Rack : Drack8b.bit	13/03/2014	13/03/2014
D2-Rack: D2rack.bin	03/11/2017	03/11/2017
D2-Rack:D2rack.bit	01/04/2014	01/04/2014
SD-Rack: Rack8b.bin	21/09/2016	21/09/2016
SD-Rack : Rack8b.bit	05/07/2012	05/07/2012
DiGiRack/MADIRack: Rack.bin	28/09/15	28/09/15
DiGiRack/MADIRack: Rack.bit	10/03/2006	10/03/2006
Optocore V221 Firmware	V5R3	V5R3

Disconnect All Local I/O, Rack Audio and Headphone Connections before proceeding with this upgrade.

Quit to Windows (*system>quit to windows*)

1. Copy the Software Updater **SD12_V1090z_Updater.exe** onto a suitable USB Key and insert into a free USB Socket on the SD12.

2. Left Click on the **Start Menu**, and choose **DiGiCo (D:)**. The explorer window will now open.

Navigate to your USB Key, and run **SD12_V1090z_Updater.exe** from your USB Key. This updater will install the required updates, application software, and backup your current SD12 application folder.

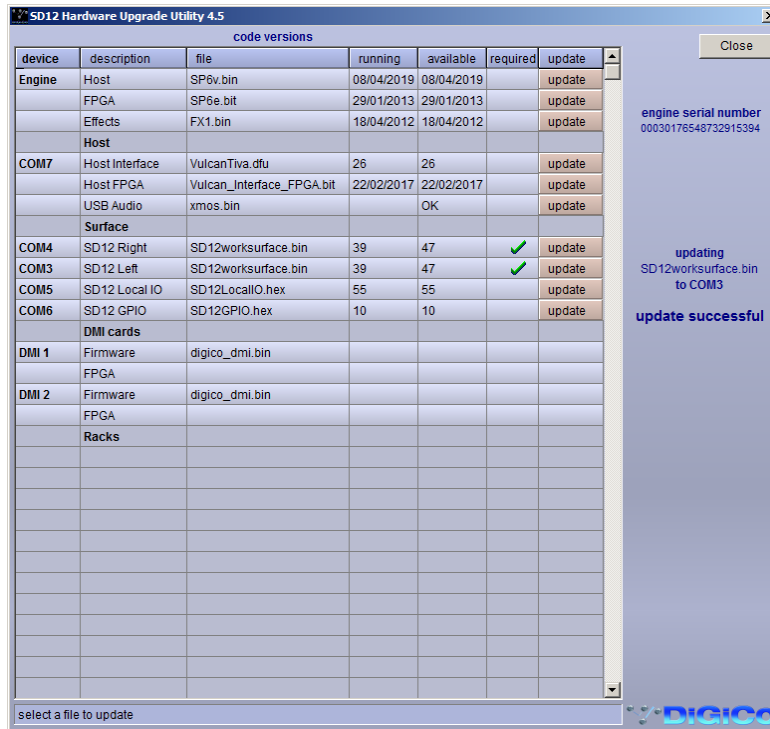
3. The **UpdateHardware** application will now automatically run.

For each device, you will see the current running version in the “running” column, with the new version in the “available” column. The available version is based on the corresponding file in D:\SD12 directory.

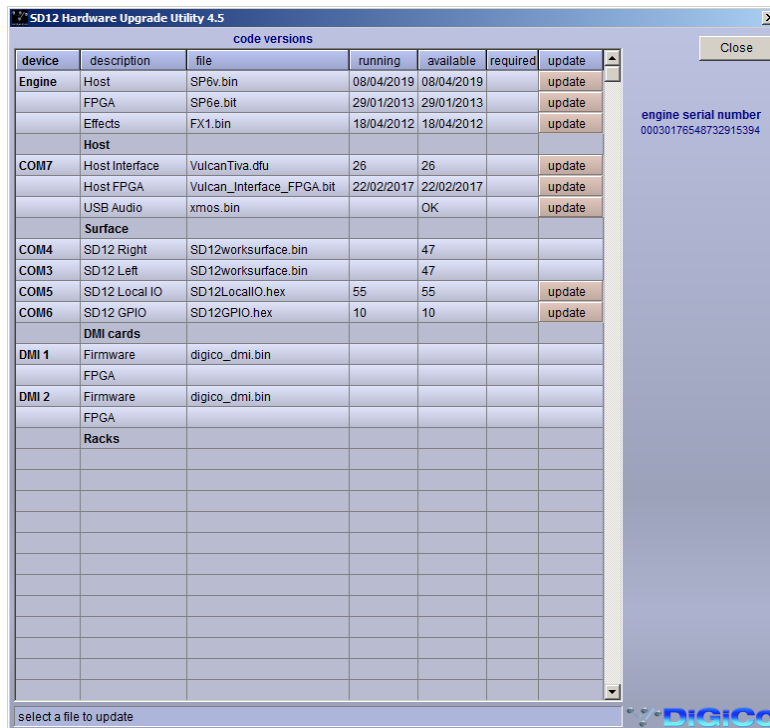
Now proceed with the console firmware updates in the following order:-

**Engine Host
Worsurfaces x 2
DMI cards (if present)**

When both surfaces have been updated the panel should look like this – please note that it appears to still require an update – this is just a symptom of not having completed the following part of the process involving the change of Baud rate – see next step...

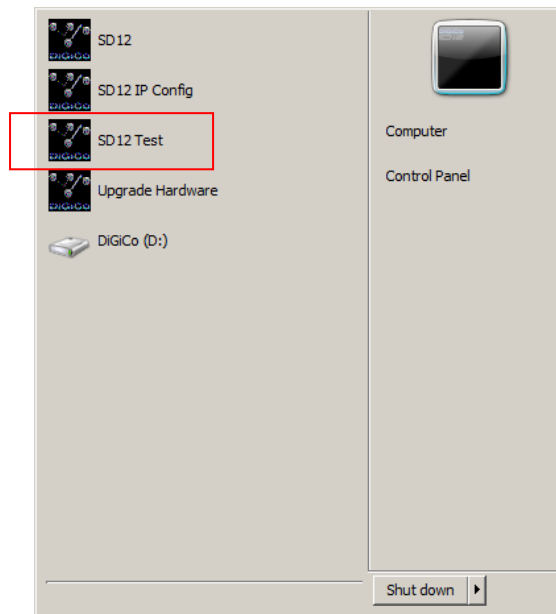


If you close and reopen the update hardware application the panel will now appear like the image below and not indicate any "Running" surface code – don't worry about this – just proceed to the next step.



Once Complete, close the **UpdateHardware** Program and remove your USB Key from the Console.

4. From the Windows Start Bar, run the “SD12 Test” application as in the image below:



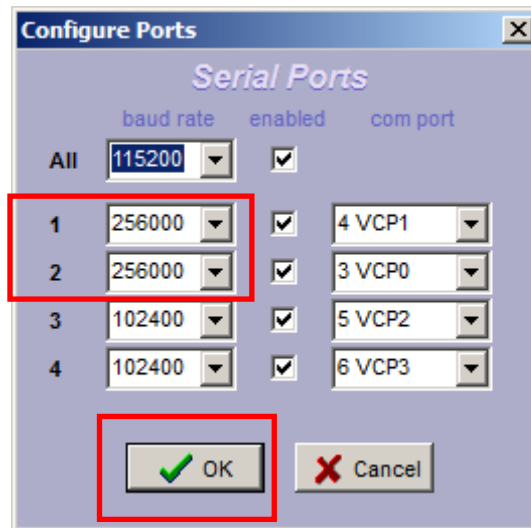
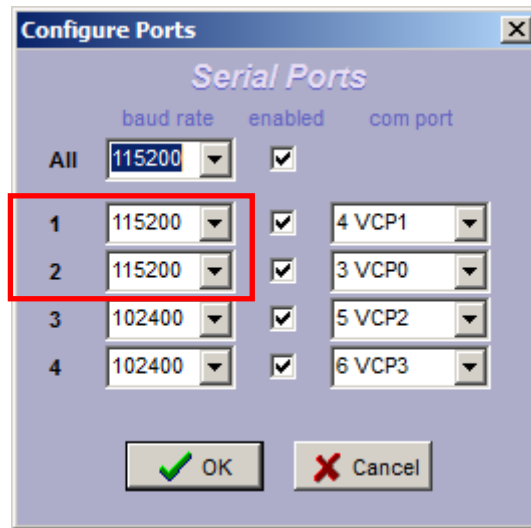
The application looks like the image below.

5. Click on the “Configure Ports” button in the top right corner of the panel.



The Configure ports panel will open.

6. The Baud Rate or Ports 1 and 2 which should be set to 115200 must be changed to **256000** by typing into the relevant text boxes and then clicking OK at the bottom of the panel.



6. Close the SD12 test Program.

7. From the Start Menu, shut down the console and power off.

8. Power the console on. The console will launch straight into the SD12 application.

You should check that all the components have updated correctly in the Diagnostics Panel.

Open this from the System Menu / Diagnostics.

The First Tab (Console) will show the version for the Worksurfaces, Local IO and GPIO that you have updated (if any).

The second Tab (Engine) will show the Engine Codes you have updated. Confirm that the Engine Host, Effects & FPGA Code Downloaded Dates match the date listed on the first page of this document.

The Third Tab (Audio) will show the Rack and DMI codes you have updated.

If, after following all the instructions, you cannot upgrade your SD12, please contact DiGiCo Technical Support.