

TECHNICAL NOTE

Date August 23
ref TN583
Raised by: IR



Distributed to : As Required

Soundtracs - Digico(UK) Ltd. unit 10 Silverglade Business Park Chessington Surrey KT9 2QL England
Tel: +44 1372 845600 Fax: +44 1372 845656 email: support@digiconsoles.com

SD11 DISPLAY REPLACEMENT

Ensure you have taken appropriate anti-static precautions

Ensure you wear a wrist strap should be connected to the chassis of the engine whilst you work on it, in or out of the mixer. A heel strap ensures the skin of your leg is connected to the floor and not isolated by a rubber soled shoe.

Avoid working in areas with synthetic floor coverings or carpet, especially polypropylene material, as opposed to natural materials such as solid wood or wool. Ideally work at a proper workbench with ESD safe features, such as a metal frame. Before work, try to discharge yourself into a mains earth fitting, water pipe etc.

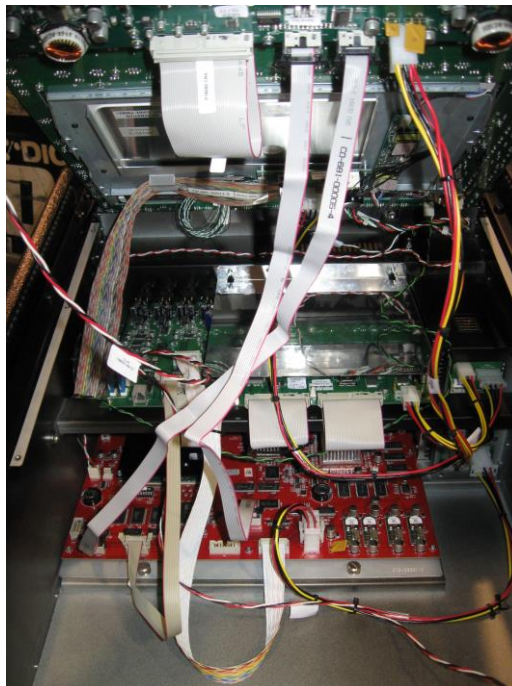
If you are unsure about any part of the procedure, seek advice before proceeding.

Before you start:

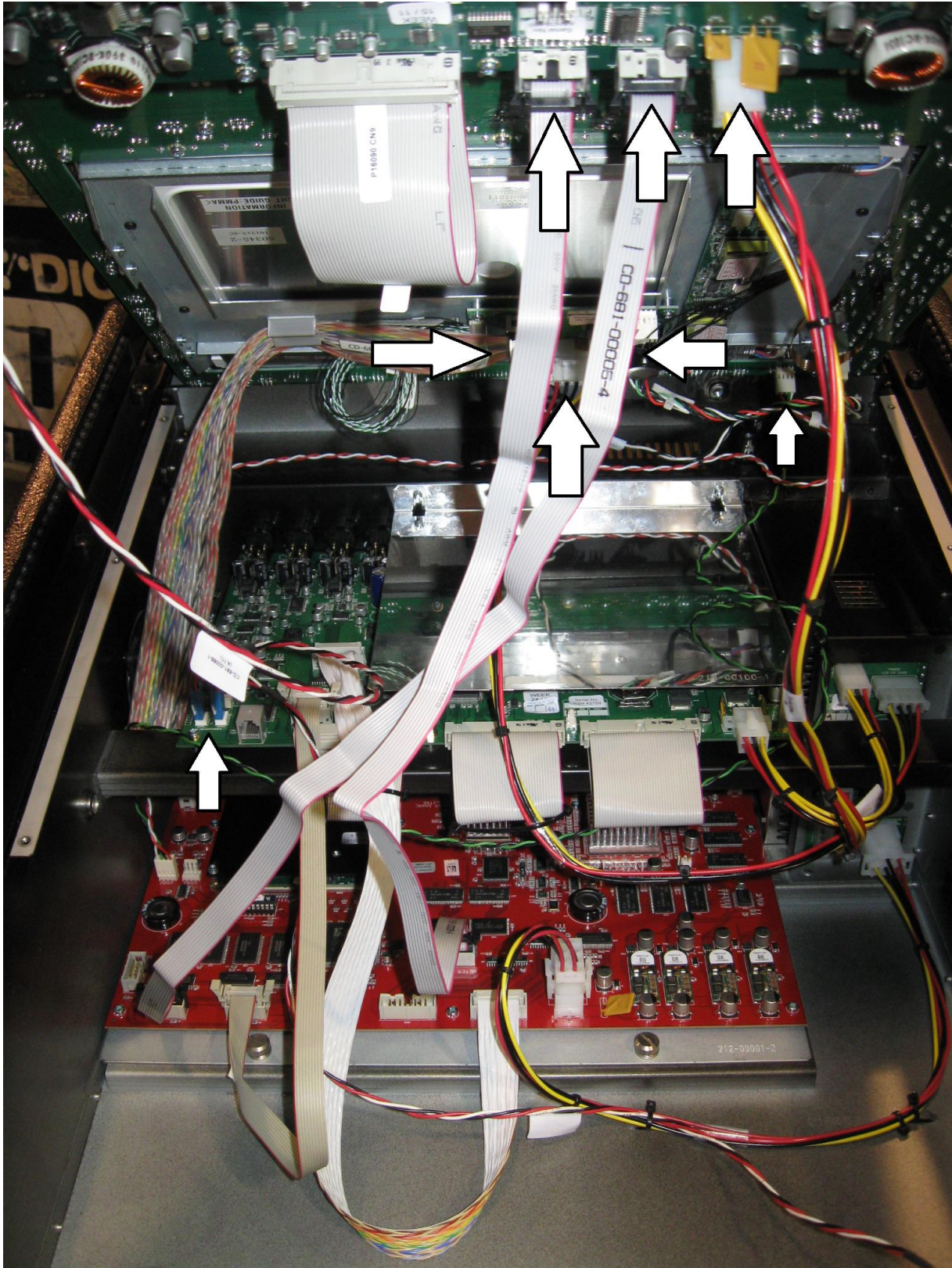
Shut the mixer down, switch off, and remove power leads. Remove all connections [MADI, MIDI, Audio, Keyboard and Mouse, VGA etc]

Lift upper surface section by first removing the end cheeks and rear and front rest, if fitted; these are secured by 4 hex drive (4mm AF) bolts.

Next remove the 12 hex drive (2mm AF) screws that hold the upper surface panel in place. Lift the panel carefully and prop or hold securely. See below for the general internal arrangement.

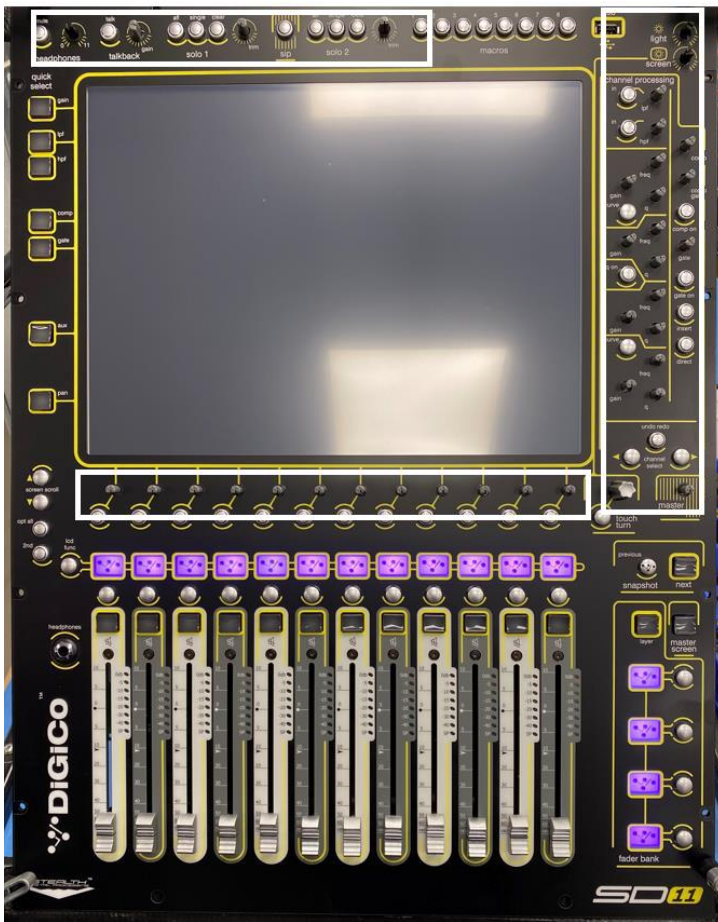


Disconnect all cables from the surface panel.

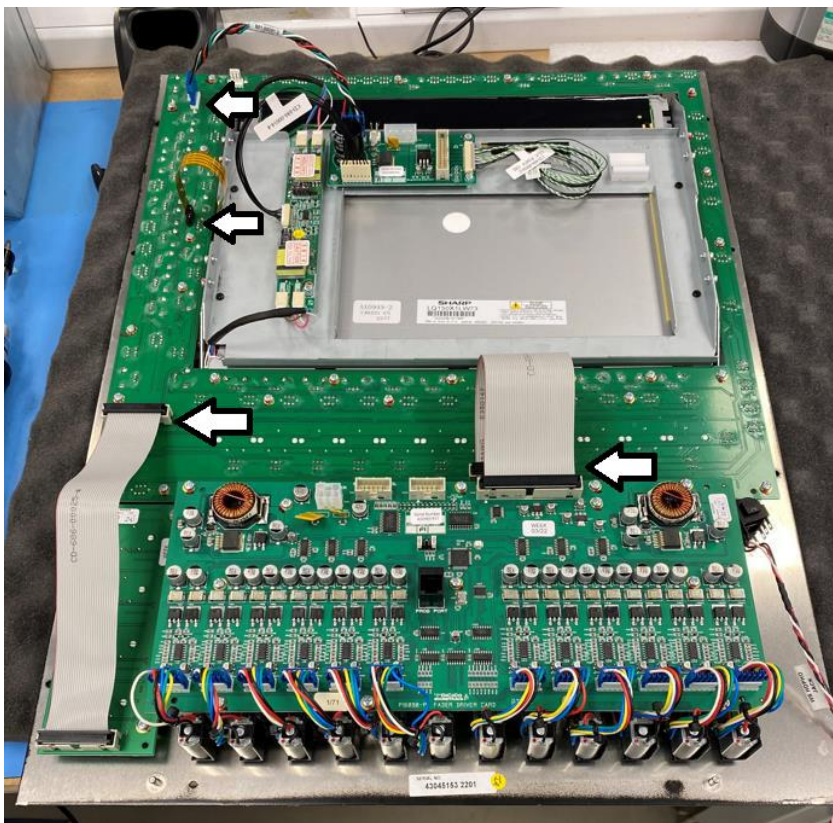


- Fader data ribbon
- Meter data ribbon
- Screen video data ribbon
- Panel power 6 way
- Screen power 4 way
- Panel USB 4 way
- 3 way headphones
- External lights 2 way

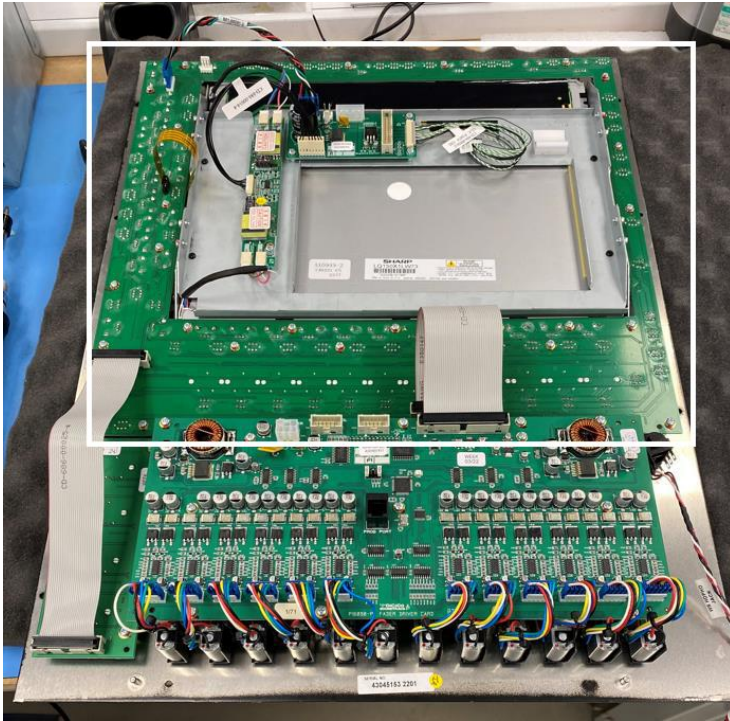
Remove all the encoder knobs from the front panel



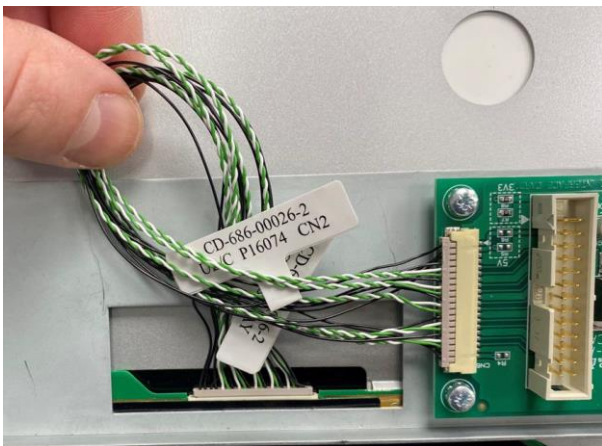
Disconnect cable connections to the main surface PCB.



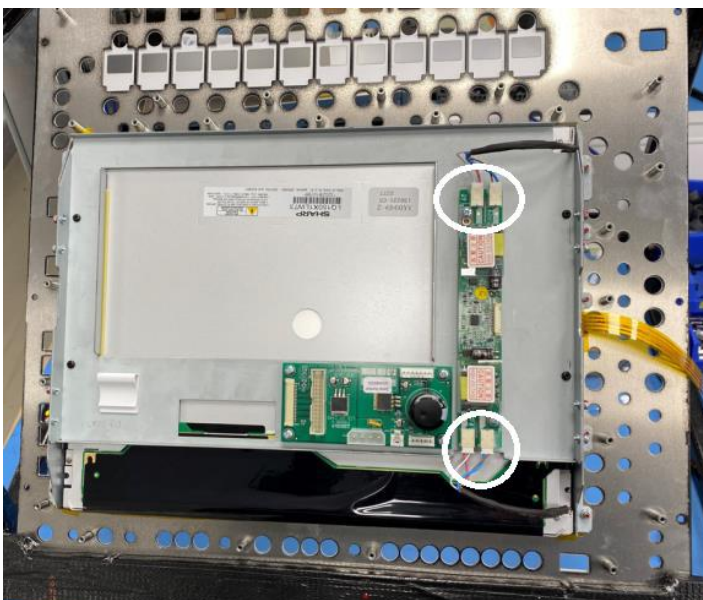
Unscrew and remove the main surface board.



Disconnect graphics cable between the display and graphics interface board.



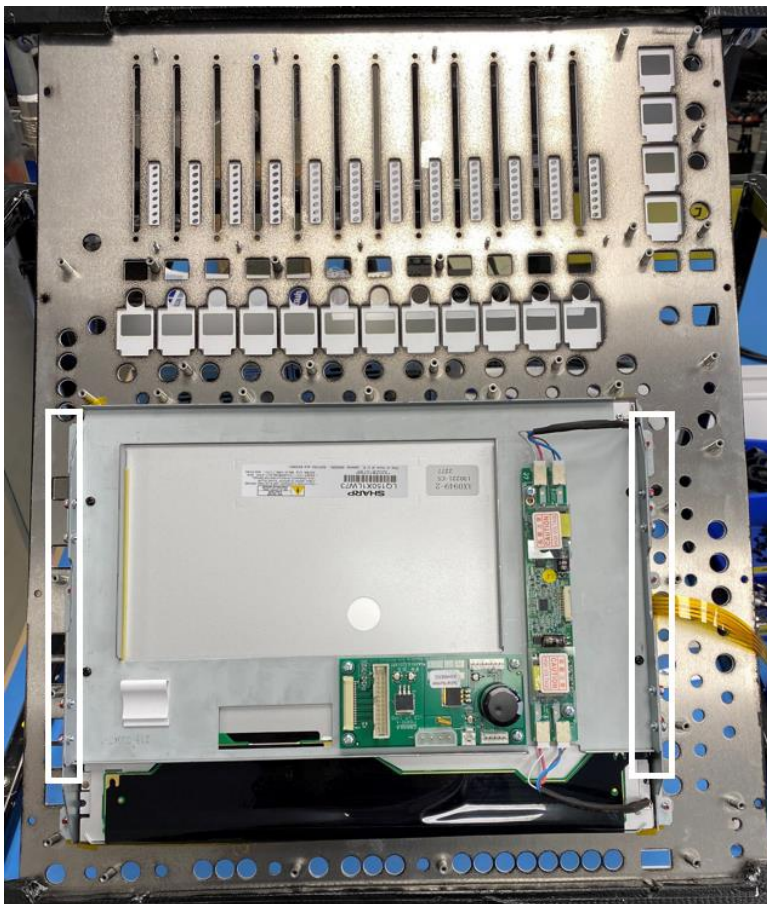
Disconnect Display inverter from the display backlights.



If either the Display inverter board or graphics interface board PA16098 are required to be replaced they can be unscrewed and removed from the bracket



Remove the M3 SL nuts that are securing the side brackets to the panel.



The display can then be removed from the panel still fitted to the rear and side brackets. Note that the touch ribbon cable is run through the bracket slot. Be careful not to damage the cable when removing the display assembly.



Unscrew the rear bracket from the display to release the display from the bracket.



Replace display and perform steps in reverse to reassemble.