

TECHNICAL NOTE

Date: 15th April 2023
Ref: 580
Raised by: AR
Distributed to: as required



DiGiCo (UK) Ltd.

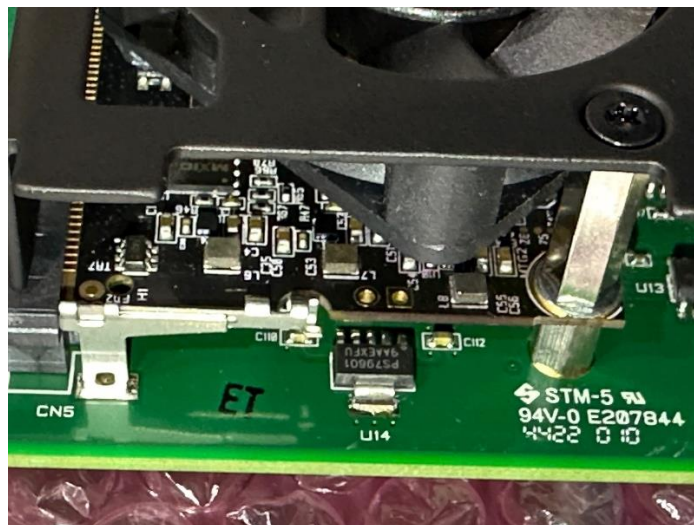
No5 The Distillery, Silverglade Business Park, Chessington, Surrey, KT9 2QL, UK
Tel: +44 1372 845600 email: support@digiconsoles.com

DMI-Dante64@96 with IP Zynq HC



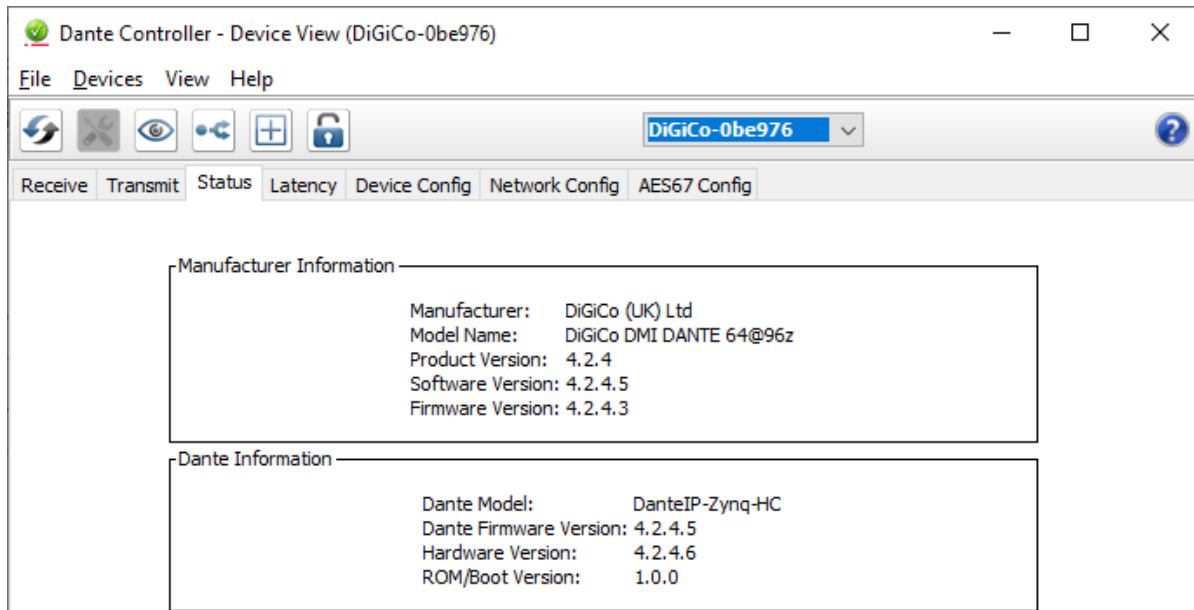
The Dante Summit HC solution previously used in the DMI-Dante64@96 card was discontinued because multiple parts became unavailable.

From March 2023 onwards the Dante 64@96 cards now have the new IP Zynq HC solution as their Dante module. The module PCB has been made from a black material, so it is visually identifiable when assembled.



Upon release the Dante firmware for the new module is 4.2.4.5 (4.2.4 DiGiCo Build). All versions are currently compatible with each other. This is not guaranteed in the future.

The DMI card and its Firmware will have a new identity suffixed with a “z” in Dante controller as shown in the picture below.



The DMI Base card (the DiGiCo side) requires firmware version V105 & FPGA 10/01/23 to work. All cards shipped from the factory will be as such and have a sticker on the PCB with the installed firmware version.



The new DMI Dante 64@96z will work in all Quantum consoles, the SD12, S Series, Orange Box and KLANG Konductor.

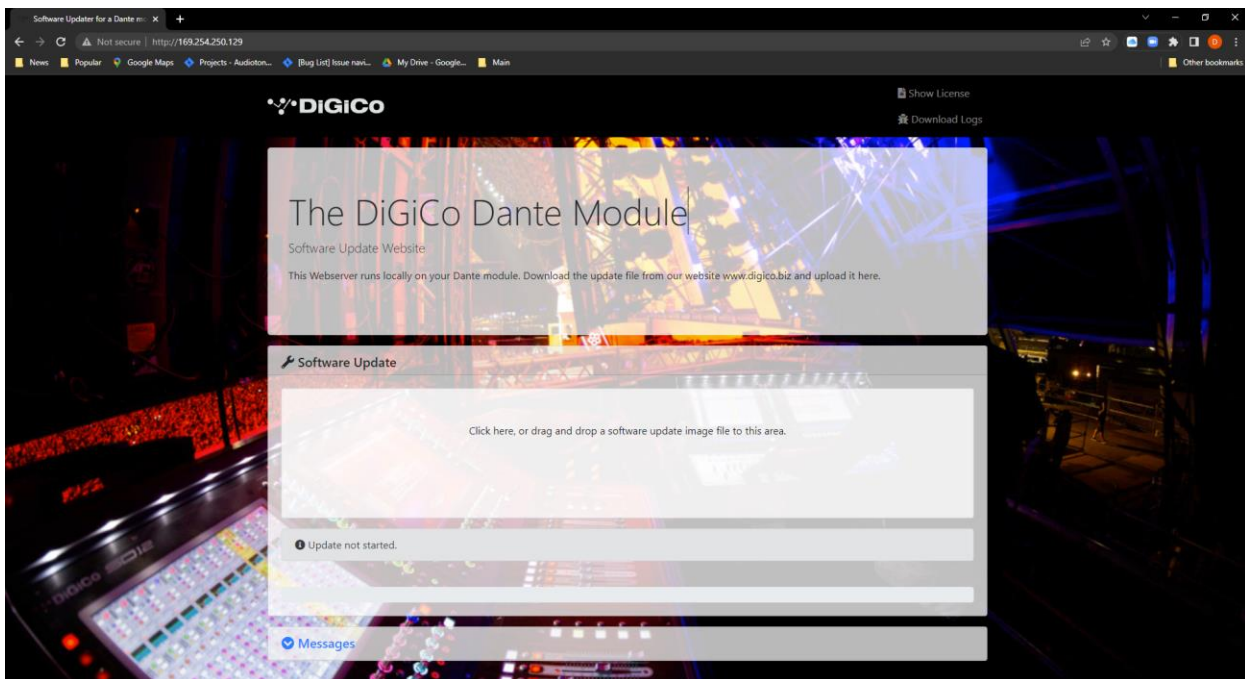
The card will not currently work in a 4REA4 system. A further firmware release is required, and this work is underway.

Currently, the control port filtering that was present on the previous card does not work. This will require an update to the Firmware from Audinate to implement the feature.

Firmware for these cards will not be available via the Dante Controller Firmware update system. This is a decision by Audinate. Instead, a web interface is used to update these cards and the procedure is described below.

DMI-Dante64@96 (with Zynq module) update procedure

1. Connect your computer to the Dante Network and ensure the computer's IP and Subnet are in the same range as the Dante devices.
2. Look in Dante Controller and locate the IP address of the DMI card.
3. Place the Firmware update file in a known location on your computer.
4. Open a Web Browser and type the IP address of the DMI card's Dante module into the browser. In the example below, the IP address of the DMI Card is 169.254.250.129
5. This should open the page below in your browser.



6. Clicking in the update space will open a file browser so you can select the Update File or drag the firmware file from its location and drop it into the box in the web browser page.
7. The firmware update should begin automatically.
8. Please note there is no update complete notice. Once the screen reverts to the view above, the process is complete.
9. The process will need to be repeated for each of these devices on the Dante network.